

## LECTURE

2  
CEMINEC America Education Center  
**MEGA SCHOOL**MINEC  
AMERICA  
Megagen International Network of  
Education & Clinical ResearchPosterior Immediate  
Implant Placement Utilizing  
“SOCKET SEALING ABUTMENTS”

Anthony LaPorte | DDS

Aug  
22  
FRIArtistic Dental  
Laboratories, Inc.  
Bolingbrook, IL

Join us for a hyper-focused 2-hour presentation by Dr. Anthony LaPorte. This course is designed to provide practical guidance on immediate implant placement utilizing the unique socket sealing abutments to preserve gingival contours for ideal emergence profile. Dr. LaPorte will discuss clinical rationale, benefits, and key considerations when placing implants at the time of extraction.

Attendees will learn how to identify different extraction socket types (A,B and C) and determine the ideal implant positioning and selection accordingly. The session will also explore guided vs. freehand approaches, soft tissue management options, and material choices for optimal restorations. Real-world clinical cases will be shared to illustrate techniques that can be applied in practice immediately and predictably—starting tomorrow.

**Learning Objectives:**

- Explain the rationale and benefits of immediate implant placement in posterior extraction sites.
- Utilize the unique socket sealing abutment to preserve gingival contours for optimal emergence profile and hard and soft tissue preservation.
- Differentiate between guided and freehand implant placement techniques and identify when each approach is appropriate.
- Classify the different types of extraction sockets (A,B, and C) - differentiating protocols for each socket type.

**COURSE SCHEDULE**

10:30am - 11:00am Registration

11:00am - 1:00pm Lecture

\*Lunch will be provided.

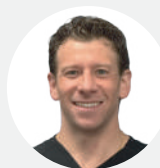
**VENUE INFORMATION**

Artistic Dental Laboratories, Inc.

470 Woodcreek Drive, Bolingbrook, IL 60440

Artistic  
DENTAL LABORATORIES, INC.**REGISTRATION**

www.minecamerica.com

**ABOUT THE PRESENTERS****Anthony LaPorte**

DDS

Dr. LaPorte completed his undergraduate degree in Biological Science and Chemistry at the University of Illinois at Chicago in 2008. He then received his Doctorates of Dental Surgery at the University of Illinois at Chicago in 2012. Since graduating, he has worked in a private practice while continuing his education. Dr. LaPorte has taken 100s of hours of CE specific to Implantology. Dr. LaPorte has been placing implants since 2013. In his private office he treats everything from single tooth implants to full arch cases.

**COURSE DETAILS**

Education Method: Lecture

Credit Hours : 2 CEU

AGD Code : 690 Implants

CE Provider : MINEC America

**TUITION**

Price | \$ 75

**INQUIRY****Holly Daigle**

(630) 915-9194

holly.daigle@megagenamerica.com

**CANCELLATION POLICY**

- Cancellations made 10 days or more prior to the course start date are eligible for a full refund.
- Cancellations made less than 10 days before the course start date will not be eligible for a refund.