



# Posterior Immediate Implant Placement Utilizing “SOCKET SEALING ABUTMENT”

7.5 CE

Immediate Accelerated Loading

Anthony LaPorte  
DDS

 Sep 25, 2026 | Friday  
 Artistic Dental Laboratories  
470 Woodcreek Dr, Bolingbrook, IL 60440, USA



## COURSE DESCRIPTION

This course offers a practical, step-by-step approach to tooth extraction, ridge preservation, and implant placement, with an emphasis on sound clinical decision-making. Participants will learn proper extraction techniques to preserve hard and soft tissue, evidence-based bone and tissue grafting protocols, and strategies for managing post-extraction complications. The program also covers implant placement in delayed and immediate sites, including case selection, risk assessment, troubleshooting, and explantation when outcomes do not go as planned. Attendees will gain insight into restoring both delayed and immediate implants using current technologies, materials, and the latest research to improve predictability and long-term success.

## COURSE OBJECTIVE

By the end of the course, clinicians will be able to:

- Getting teeth out, how to properly extract teeth and preserve ridge for future or immediate implant placement.
- Bone and tissue grafting after tooth has been extracted. What materials to use and when, and why.
- Managing complications after tooth extraction.
- Placing implants in delayed sites, how to manage bone and tissue in delayed implants.
- Explanting, for when things don't go as planned.
- Immediate implant placement: when to do them, how to trouble shoot them, and how to weight out the risks.
- How to restore delayed and immediate implants with today's technology, materials, and most current research.

## TARGET AUDIENCE

Dentists. No pre-requisites required

## COURSE DETAILS

Educational Method	5.75 CE Lecture & 1.75 CE Participation
Credit Hours	7.5 CE
AGD Subject Code	690 Implants
Max Participants	15

## TUITION

\$599

**Cancellation Policy:** Cancellations made 10 days or more prior to the course start date are eligible for a full refund. Cancellations made less than 10 days before course start date will not be eligible for refund

## CONTACT INFORMATION

Holly Daigle

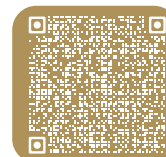
(630) 915-9194

holly.daigle@megagenamerica.com

## REGISTRATION

[www.minecamerica.com](http://www.minecamerica.com)

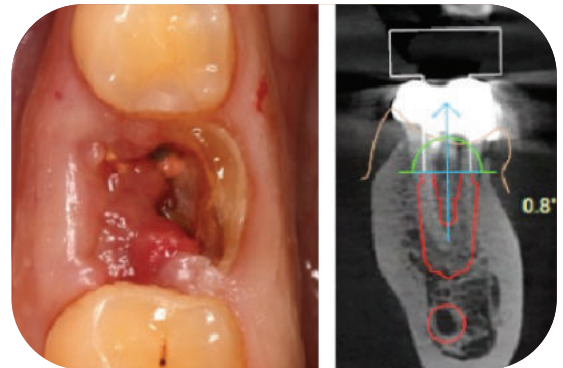
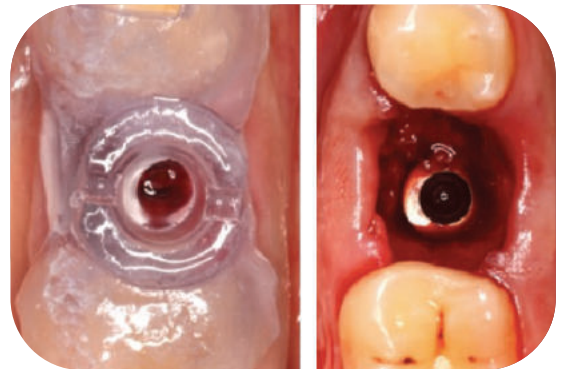
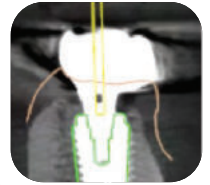
REGISTER NOW



## COURSE SCHEDULE

Sep 25 (Fri)

07:30am - 08:00am	Registration
08:00am - 10:00am	Lecture
10:00am - 10:15am	Coffee Break
10:15am - 12:00pm	Lecture
12:00pm - 01:00pm	Lunch
01:00pm - 03:00pm	Lecture
03:00pm - 03:15pm	Break
03:15pm - 05:00pm	Hands-on Session



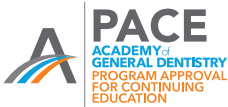
## ABOUT THE INSTRUCTOR



**Anthony LaPorte**

DDS

Dr. LaPorte completed his undergraduate degree in Biological Science and Chemistry at the University of Illinois at Chicago in 2008. He then received his Doctorates of Dental Surgery at the University of Illinois at Chicago in 2012. Since graduating, he has worked in a private practice while continuing his education. Dr. LaPorte has taken 100s of hours of CE specific to Implantology. Dr. LaPorte has been placing implants since 2013. In his private office he treats everything from single tooth implants to full arch cases.



MINEC America (MegaGen International Network of Education & Clinical Research)  
Nationally Approved PACE Program  
Provider for FAGD/MAGD credit.  
Approval does not imply acceptance by  
any regulatory authority or AGD endorsement.  
10/1/2022 to 9/30/2026.  
Provider ID# 322397

SPONSORED BY



This activity has been planned and implemented in accordance with the standards of the Academy of General Dentistry Program Approval for Continuing Education (PACE) through the joint program provider approval of MINEC America and MegaGen America. MINEC America is approved for awarding FAGD/MAGD credit. AGD ID# (322397)