

# SCAN, PLAN & PRINT

## Fundamental

Hands-on Training for Seamless  
Integration of a 3D Printing Workflow  
into Your Practice

Kayla Nale

Dec  
04  
Thu

 Innovative Smiles Dental Lab  
Hatfield, PA

In this course, participants will learn methods and protocols for integrating 3D printing technology into their daily practice. The curriculum covers techniques such as the use of IOS, treatment planning, and the design and fabrication of surgical guides and temporary crowns.

Through hands-on practice, attendees will acquire the skills needed to effectively incorporate these advancements into their clinical workflows.

### Learning Objectives:

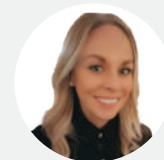
- Understanding digital workflow of the ELITE scanner with photogrammetry.
- Demonstrating scanning with the Elite scanner and 3D printing techniques.
- Design, print, and finish a crown utilizing a 3D printer.
- Selection of materials for 3D printers and prosthetic types
- Dental treatment and prosthesis fabrication using intra-oral scanners and 3D printers
  - Understanding the process of fabricating fixed and removable prostheses using Dental CAD software
  - Aesthetic finishing process post-printing of prosthetic materials
- Fabrication of surgical guides using R2Gate and 3D printers
  - Establishing implant placement and surgical plans using R2Gate software
- The practical session includes:
  - Evaluate and apply proper implant planning guidelines and execute guide design
  - Designing and printing prosthetic materials using CAD software
  - Each uses one laptop to conduct hands-on Aesthetic finishing after printing prosthetic materials

### Who Should Attend?

Doctors, clinical staffs, and dental lab technician

\*Pre-requisites are not required.

### ABOUT THE PRESENTERS



**Kayla Nale**  
Digital Specialist, CDT

### COURSE DETAILS

Education Method	Lecture & Participation
Credit Hours	2.5 CEU ( 1 Lecture, 1.5 Participation)
AGD Subject Code	690 Implants
Max Participants	20

### TUITION

\$150

### COURSE SCHEDULE



5:30pm - 6:00pm	Arrival, Registration and light dinner
6:00pm - 8:30pm	Demonstration of scanning using the Elite scanner / Demonstration of 3D printer

### VENUE INFORMATION

**Innovative Smiles Dental Lab**  
2702 Elroy Road, Hatfield, PA 19440



### REGISTRATION

 Tess Scott  
 Tess.scott@megagenamerica.com  
 610-401-3453

